



TUMOH NATIONAL CO
شركة الطموح الأهلية

COMPANY PROFILE



PROFILE PDF



TUMOH NATIONAL CO
شركة الطموح الأهلية

COMPANY PROFILE

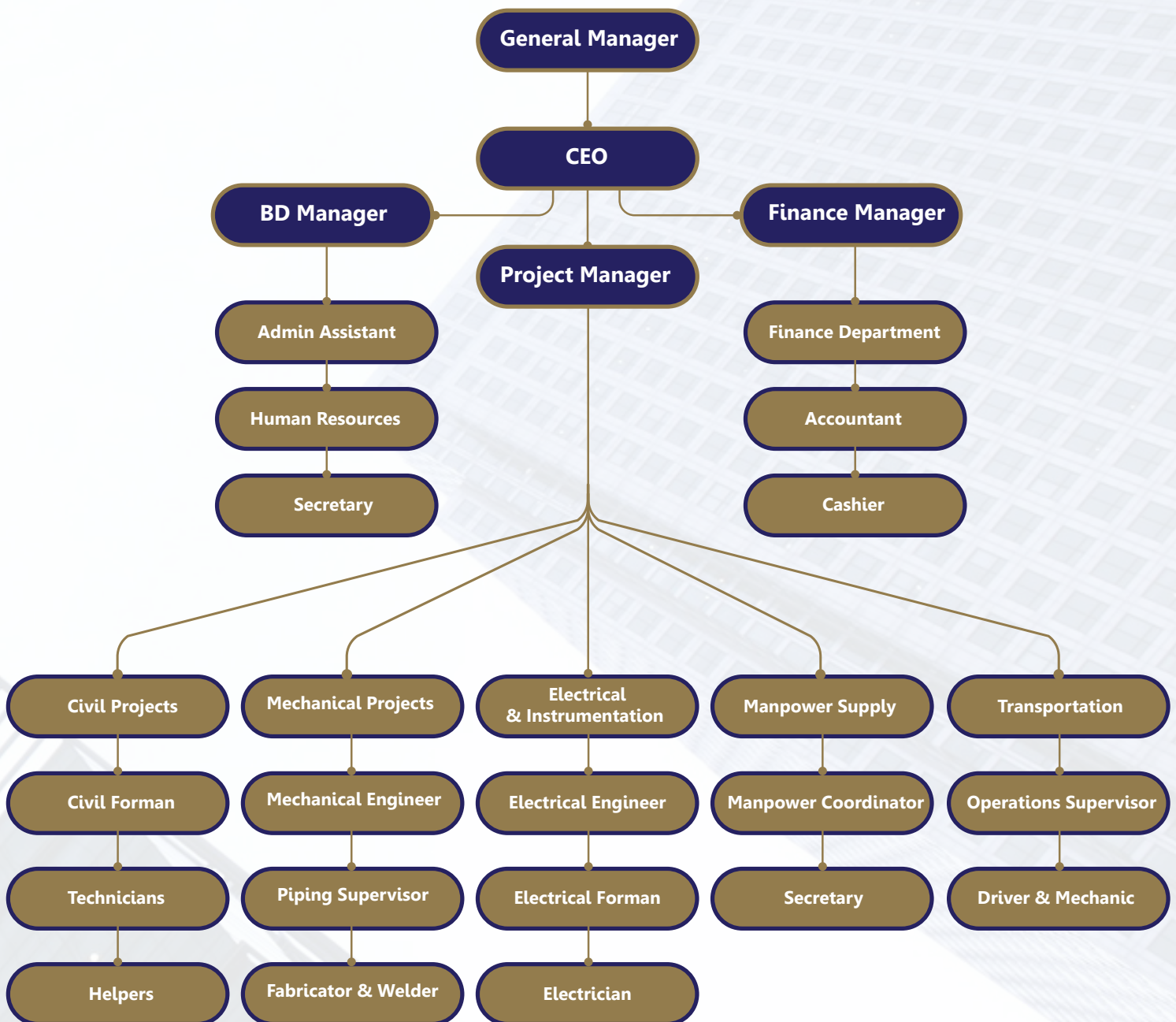
BUREAU VERITAS
Certification



The TUMOH NATIONAL CO. was established in 2007 is one of the fastest growing company in Kuwait. Since the establishments of
THE TUMOH NATIONAL CO.

We never cease and compromised with safety and quality in all areas of our operations. It enables us to have a prompt and stable growth in challenging Kuwait market. Our core activities includes, but not limited to; Oil Sector and piping, Constructions, Civil Works, Equipment and Man Power Supply, Project Execution, and consultancy. Our primary objective is to offer ultimate clients satisfaction through our unceasing dedicated efforts. We always ensure our task is completed within the timeframe, avoiding waste of time and resources by experienced and talented Management Team.

ORGANIZATIONAL STRUCTURE



CEO MESSAGE



MR. SUROOR N. ALHAJERI

Chief Executive Officer (CEO)

ceo@tnco.com.kw

The TUMO NATIONAL CO. was established in 2007, and the construction is the company's first for three years, the company has numerous construction projects and finishes for a number of clients, and has been done professionally and marked, that the company looked forward to offer more market need miscellaneous services and diversify sources of income , An exhaustive study of the market needs and the types of services of interest to clients, decided to diversify its services in line with the rapid development on all levels, with emphasis on providing all services chosen by the company in all honesty and sincerity to all clients, The company has gained a reputation among all partners and clients alike thanks to the administrators, the company has paid serious attention in the transport area of large demand, have been implemented many government contracts and transport capacity, and the company had the honour to get confident contractors because of credibility and excellence in execution of the work, Add to that the evolution of the company and the diversity of its services and expand to import food and other logistics services with high demand, we aspire to be good when he thought our clients in delivering quality services and best, and we hope from Allah almighty to help us to do that which he loves and which pleases him.

Business Development Manager Message

The Tumoh National Co prides itself in the implementation of many projects and Government contracts and civil and oil with major domestic and foreign companies professionally and excellence, whether infrastructure projects or projects of logistic nature concerning the supply of specialized technical labor and transportation Various equipment needed to implement these projects.

The Tumoh National Co was established, the civil year 2007 with a paid up capital of 1.000.000 (One Million KD) during this short period we were able to put our name on the local market through the implementation of projects and contracts in multiple areas with precision and efficiency.

We aspire to have a clear and obvious footprint in the local and regional market especially with so many competitors and it will only be achieved by providing the best solutions, ideas and harness all possibilities to provide the best service and finest, where we as.

The Tumoh National Co executive management capacity are keen to project selection And contracts carefully by our engineers and studied carefully and consider their feasibility before implementation. So we make sure we deliver the best results you get on our clients satisfaction to be with it partners in success, As a BD Manager in Tumoh National Co eligibility and on behalf of all administrators thanks and appreciation to all our valued Clients for their trust in us and our precious and wish to We at goodwill.



MR. CHANDRA NATH YADAV

Business Development Manager
Yadav@tnco.com.kw



INTRODUCTION

We take this opportunity to introduce our company, we The TUMOH NATIONAL CO Is one of the leading companies in Kuwait in the field of Construction, Pipeline, Structural Engineering & Manpower Supply. Since 2007, by highly dedicated and experienced Technical staff. The company is managed and geared up to undertake have been engaging in construction activities for jobs and assignments in the field of Design, Supply, Installation, Mechanical, Civil, & Electrical work various Project.

The company Head office located in Fahaheel to facilitate prompt services. It is fully equipped with its own infra- structure needs of workshops for Fabrication & Mechanical, equipment & tools and store facility equipped with essential spare parts for Mechanical Pledges & Performs with full commitment to provide its clientele best quality of work at the reasonable, competitive terms followed with prompt and excellent services as when required.


Our inspiration comes from listening to clients and providing solutions for the challenges and opportunities you face. The following service is offered through our group of companies.

“SERVING PEOPLE TO IMPROVE QUALITY OF LIFE.”


OUR VISION

	<p>The TUMOH NATIONAL CO aspires to be one of the biggest companies on the local and regional level, by providing the best business with a high and advanced technique, a comprehensive, rebuked skilled local technical experience, characterized by services diversity and multiplicity of alternatives at competitive prices, in several areas, and looks to be good for their clients and seeks their consent.</p>
-----------------------------------------------------------------------------------	------------------------------------------------------------------------------------------------------------------------------------------------------------------------------------------------------------------------------------------------------------------------------------------------------------------------------------------------------------------------------------------------------------------------

OUR MISSION

	<p>Our company hopes to be a model of excellence in the quality and diversity of its services from contracting , finishes and carriage, locally and regionally, and to maintain leadership, originality and precede the ambitions of their clients at the level of its services, and to satisfy its shareholders, origami society and development, and develop national element through his training and abilities to contribute to the growth and prosperity of the motherland.</p>
-------------------------------------------------------------------------------------	--------------------------------------------------------------------------------------------------------------------------------------------------------------------------------------------------------------------------------------------------------------------------------------------------------------------------------------------------------------------------------------------------------------------------------------------------------------------------------------

OUR CORE VALUES

	<p>We hope to switch to a leading company in the field of construction and transportation, work according to the highest international quality, and continue to discuss client needs, provide excellent services, and access to local and regional reputation, encourage national youth to engage in the private sector, by providing advice and guidance which lead them to the private work.</p>
-------------------------------------------------------------------------------------	----------------------------------------------------------------------------------------------------------------------------------------------------------------------------------------------------------------------------------------------------------------------------------------------------------------------------------------------------------------------------------------------------

“OUR WILLINGNESS EXTENDED UP TO CLIENT DELIGHT BY FULFILLING THEIR REQUIREMENTS”

BUSINESS ACTIVITIES

- Refineries & Petrochemical Plants.
- Power and desalination Plants.
- Pipe Line and associated Works.
- Maintenance works for Refineries, Petrochemical & Oil Field.
- Steel Structure.
- Oil Gathering Centres.
- Facilities and power Plant.



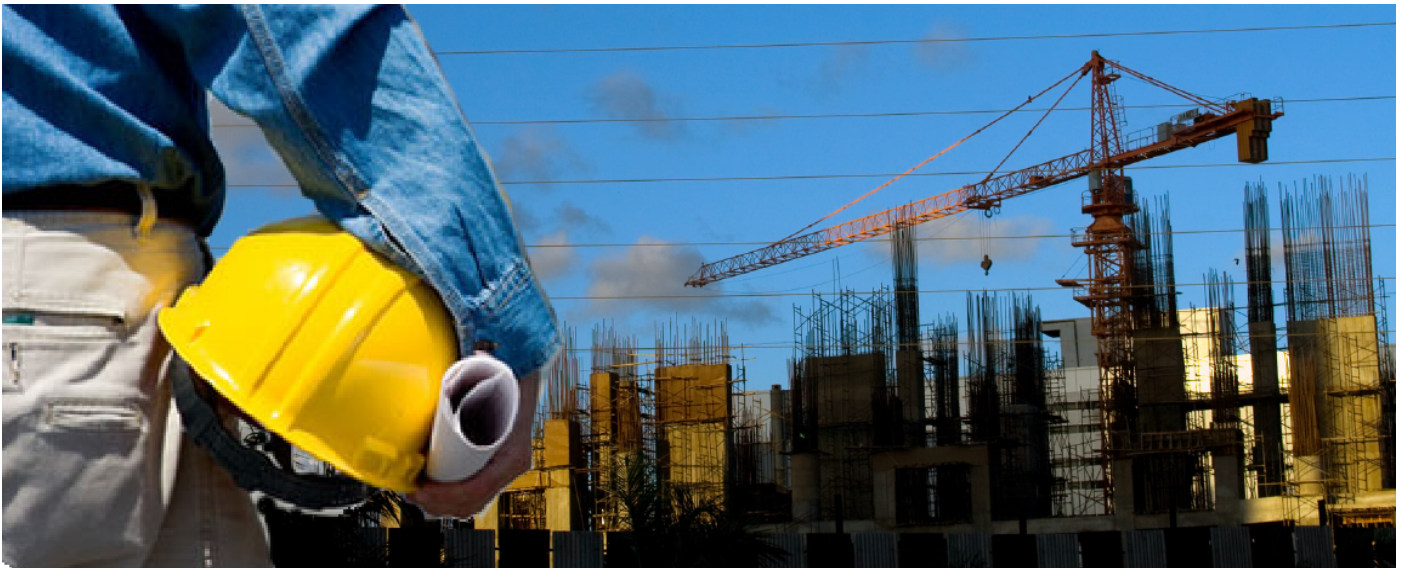
PROCESS PIPING & PIPELINE



One of the most important components of the infrastructure in the industrialized world is the vast network of pipelines and process piping—literally millions and millions of miles. The term “pipelines” generally refers to the network of pipelines that transport water, sewage, steam, and gaseous and liquid hydrocarbons from sources (e.g., reservoirs, steam plants, oil and gas wells, refineries) to local distribution centers (“transmission pipelines”), and to the network of pipelines that distribute such products to local markets and end users (“distribution” pipelines). The term “process piping” generally refers to the system of pipes that transport process fluids (e.g., air, steam, water, industrial gases, fuels, chemicals) around an industrial facility involved in the manufacture of products or in the generation of power. Pipelines and process piping are generally made of steel, cast iron, copper, or specialty metals in certain highly aggressive environments, but the use of plastic materials is growing, especially in hydrocarbon-based distribution lines and in sewer lines. Very large-diameter water transmission lines are often made of reinforced concrete.

STORAGE TANKS

Above Ground Storage Tanks, Oil Storage Tanks, Steel Storage Tanks, We have built up to Seventy-Two tanks on a single project. Typical projects include API or AWWA tanks. RMF has the expertise to design, fabricate and field erect various process tanks such as: fuel storage tanks, acid storage tanks, water storage tanks, and process storage tanks. Scalloped bottom elevated tanks, thickener tanks, clarifiers, mechanisms, etc. Process design companies rely on RMF's expertise to build their structures to meet the stress requirements and have the quality and workmanship that will last the test of time in the harsh process environment.





ELECTRICAL & INSTRUMENTATION

Tumoh National Co Electrical & Instrumentation division has significant experience in delivering complete electrical and automation projects to major operators. Our clients include world-leading companies from the chemicals, oil & gas and energy industries. We understand the challenges these industries face today: they need to reduce operational costs, maximize uptime and optimize maintenance efficiency. Our integrated services allow Tumoh National Co to manage every aspect of a complex workscope or project, including project management, planning, design and engineering, material procurement, equipment testing, installation and commissioning. Ongoing inspection and maintenance is delivered by multi-skilled project teams, improving project efficiency.

The Tumoh National Co Electrical & Instrumentation project teams provide a range of support functions including drawing modifications, work pack production and material procurement. When needed, we integrate complementary services from across the Tumoh National Co group, such as rope access, scaffolding, plant, machinery and manpower resourcing, to ensure tailor-made solutions for your specific project requirements.

HOW WE ADD VALUE:

- Complete life-cycle services: design, execution, service & maintenance, calibration and validation.
- The ability to work on electrical low voltage distribution networks up to 30kV high voltage installations.
- We cover the complete instrument and control technical spectrum: the total loop from PLC/SCADA up to and including the field components.
- Cost-saving building-related systems for industrial and utility construction.
- Customized maintenance and inspection solutions to meet your specific needs.

MANPOWER SUPPLY



The TUMOH NATIONAL CO. With its experience has been servicing many sectors such as Construction Sector Companies and Various Companies in their Manpower requirement.

The TUMOH NATIONAL CO. is the leading recruiter of specialist, flexible and contract workforces and a respected authority in employment.

The TUMOH NATIONAL CO. expertise is available to employers throughout the Kuwait.

The TUMOH NATIONAL CO. Works in partnership and in collaboration with business friends specialized in Several Sectors and with businesses of all types and sizes, to deliver flexible and reliable staffing to meet changing business need. The company strongly believes in and actively supports the development of flexible manpower markets. These have proven to deliver the most success economically as well as providing more varied and better employment opportunities.

CIVIL WORK



Tumoh National Co deliver wide variety of solutions and customized proposals, which is innovative, practical, cost-effective and efficient, in the area of civil work. Our experienced in-house engineers undertake work and oversee meticulously all aspects of working stages from one end to other end, i.e., from design, supply and installation to commissioning of the project. We assure highest level of quality workmanship at all stages of work including on-site commissioning by our team. Following are major working portfolio includes:

- Steel structures
- Concrete structures
- Earthworks (cut/fill)
- Water drainage networks
- Sewage networks
- Landscaping
- Interlock block paving
- Dry wall, block wall
- Kerbstone
- Road works (subgrade, subbase, asphalt laying)
- Car park shed
- Fire fighting systems
- Roofing systems
- Water proofing system
- Plastering
- Painting
- Gypsum partition/ ceiling
- Tile/stone works
- Screed flooring

SUCCESSFUL PROJECTS



1. Completed Contract For Supply New Vehicles (Half Lorry) Mitsubishi Almulla With Drivers And Labors To Ministry Of Education For Two Years.
2. HVAC Duct Work Including Installation Of All Fitting And Installation Under Concrete Slabs, And Installation Under Steel Structure With Sino Great Wall International Engineering Co LTD In South Ahmadi With KOC.
3. PAVING & KERBSTONE WORK for the Construction of New Houses With Gulf Dredging & General Contracting Co. (KSC) In South Ahmadi With KOC.
4. Supplied Manpower to do Piping job, Electrical & Instrument works For Spetco International Petroleum Company W.L.L at West Raudhatain, North Kuwait With KOC.
5. Completed Electrical & Instrumentation work and Cable Tray For Naser M. Al-Baddah & Partner General Trading & Contracting Co. W.L.L (NBTC) at North Kuwait Abdali.
6. Installation of Concrete Masonry Units & Accessories and Lime Brick and Accessories and tie beams/column, With China state Construction Engineering Corporation (Middle East) LLC. at Ministry Of Defense In Julaiah.
7. Completed Civil Work for Installation of Pavers & Backfilling Works With SinoHydro Corporation Ltd. at New Kuwait University.
8. Supplied Vehicles (TATA Buses 55 Seats) With Drivers To Naseer S. Al Hajri & Partner General Trading & Contracting Company (NSH) At Alzour South Kuwait.
9. Completed Construction of Concrete Footings & Warehouse Steel Workshop For Al Dehal For General Trading Company.

The TUMOH NATIONAL CO. solutions and services covers a broad range of industry leaders and a diverse set of highly-innovative organizations, Government Agencies, Health Care Institutions and others.

SOME OF OUR MAJOR CLIENTS INCLUDE:

- MINISTRY OF EDUCATION
- NASER.M.ALBADDAH & PARTNER GEN AND TRD & CONT CO W.L.L (NBTC)
- SINO GREAT WALL INTERNATIONAL ENGINEERING CO. LTD
- GULF DREDGING & GENERAL CONTRACTING CO.KSC.
- SINOHYDRO CORPORATION LTD.
- CHINA STATE CONSTRUCTION ENGINEERING CORPORATION (MIDDLE EAST) LLC.
- NASER.S.ALHAJERI & PARTNER GEN AND TRD & CONT CO (NSH).
- SINOPEC TENTH CONSTRUCTION COMPANY LTD.
- SPETCO INTERNATIIONAL PETROLEUM COMPANY W.L.L.
- ALGHANIM INTERNATIONAL GEN. TRD. & CONT. CO. W.L.L.

OUR EXPERTISE

The TUMOH NATIONAL CO. is committed to provide first class Professional services of the highest industry standards .Our dedication to protecting and preserving the environment in Kuwait through professional excellence that enable us to provide the highest quality and most flexible solutions to meet all our clients requirements.

The TUMOH NATIONAL CO. is organized into various operating divisions is devoted to the delivery of a particular type of service below.

- Civil Construction & Maintenance Work.
- Electrical & Instrumentation Work.
- Mechanicals Work - Welding & Fabrication.
- Technical & Non Technical Manpower Supply.
- Transportation Services.
- Sub Contracting Work.

“OUR DEDICATED PROFESSIONALS STAY READY ALWAYS TO, FULFIL ALL OF OUR CLIENT REQUIREMENTS & GIVE WINGS TO THEIR PROFESSIONAL DREAMS”

QUALITY AUDIT AND CONTROL POLICY

Introduction

This program is to ensure that all works to be accomplished by TUMOH NATIONAL CO, comply with drawings, specifications, applicable codes and other project requirements.

Procedures described in this program are to be arranged according to the various types of works.

The QA/QC program is implemented to:

- Established control levels.
- Define what must be controlled.
- Identify deviations early and take prompt actual measurement.
- Feedback and follow-up all elements of design, material procurement, service acquisition, fabrication, assembly, shipping and construction.
- Verify and record Q.C. activities.
- Maintain efficient communication with consultant and/or client.

Organization and Responsibility:

- Responsibility for quality assurance of all works rests with the Quality manager there included documentation in accordance with quality assurance program, project specifications and contractual requirements.
- Under the responsibility of Quality Manager, QA/QC group conducts the following:
 - Supervision of quality verification, inspection and documentation
 - Maintenance of QC files
 - Monitoring adherence to drawings, specifications and material control procedures
 - Supervision of test laboratory
 - Q.C. training classes

- Preparation of inspection plans and provisions of technical direction regarding determination and selection of Q.C. inspection points.

Approval letter or forms

Installation records

Inspection reports inspection planning standard forms, test reports, NDT data and reports

Sub-contractor records

QA/QC program, inspection and test reports, qualification records and certifications

Procurement Control

Materials, equipment and services will be procured from qualified suppliers after source inspection, obtaining evidence of quality or witnessing and review of supplier's quality assurance, operation and testing system.

Examination of the products upon delivery shall be carried out for conformance to the project requirements.

Material and Equipment Control

Equipment and materials are to be identified and controlled throughout receiving, storage and erection. Received items to be verified, documented and marked or tagged for subdivided storage, issue, inspection or tests and special maintenance operation while in storage. Storage class, condition, location and requirements are specified and documentation for acceptability.

Inspection/Testing

Inspection plans are developed from the engineering criteria, technical quality control directives and field inspection plan by the Quality Control engineer, for each phase of receiving, storage, production, installation and testing.

Inspection or test is to ascertain that equipment and materials are manufactured and erected in conformance to QA/QC program, purchaser's data sheets, specifications and applicable codes. Inspection/test will be carried out by other than those who performed the activity, based on the established acceptance or rejection criteria and methods of inspection after identification of characteristics and activities to be inspected and its result will be clearly indicated by means of stamped marking, tags, labels, routing cards or other suitable means of identification. Determination of the inspection points will be predicated upon the importance, complexity, degree of proof required and any approved client or program requirements.

Non-Conformance Control

Non-conformance on inspected items shall be documented and promptly reported to appropriate management for disposition.

Non-conformance report to be initiated by QC inspector shall identify and describe the non-conformance and provide approved disposition instruction thereon. This report shall be maintained in an open file until disposition has been resolved and the non-conformance has been satisfactorily re-inspected by the initiations.

The hold tag shall be tagged on non-conformance item until the remedial action is completed. QC engineer will have suppliers/sub-contractors establish and implement effective non-conformance disposition scheme for safety related materials and services furnished or installed by them. The suppliers/sub-contractors will be periodically supervised to verify the effectiveness of their non-conformance program.

To achieve quality assurance, the QC engineer having extensive knowledge in design and construction for all disciplines will be assigned to the project.

Policy Statement

It is the policy of The TUMOH NATIONAL CO to uphold both moral and contractual obligation and to provide a safe and health working environment for all employees during the execution of the works in the fields

The primary objective of this program is to prevent any accidents that could result in injury or fatality to personnel and/or damage or destruction of property, equipment or materials in the field and to increase construction efficiency through maintaining safe working condition.

Organization and Responsibility

All Supervisory personnel at the job site shall extend their best efforts to create the safe environment to work. They shall be accountable for the protection of equipment and property within area of responsibilities through exercising loss prevention measures over the job site.

Site Manager had overall responsibility for safety and security at the site. The Safety organization shall be established under his responsibility to obtain the involvement and participation of all personnel, including sub-contractors, in safety activities, and to recognize that loss prevention is a part of all work to be done. Site Manager appoints a Safety Engineer who is responsible for developing establishing and monitoring comprehensive loss prevention and safety activities on the work site. He reports his findings to the Site Manager.

Enforcement of loss prevention requirements shall be done by the entire supervisory organization of the work.

Superintendents and Supervisors are responsible for implementing safety plan within the scope of their separate assigned duties, as may be necessary to eliminate or reduce any hazardous or harmful conditions in the field.

General and specific responsibilities for safety and security are assigned to foremen and craftsmen.

Safety Program

It is convinced that construction work can be performed safely when comprehensively planned, managed and supervised. Prior to start of site work, job safety requirements shall be planned with the considerations to:

- Company's loss prevention requirement
- Location of site
- Background and quality of labour resources and anticipated training program
- Nature of the construction work
- Types of hazards anticipated
- Materials and Equipment to be used.

Safety Program

- To maintain safety awareness to all employees, the following activities shall be carried on throughout the course of the project:
- Safety orientation will be given prior to beginning of the work.
- Site Supervisor shall be fully knowledgeable of the potential hazards involved in the work they supervise and the safe practices to be followed in the work.
- Regular safety meeting shall be held for construction employees conducted by their Supervisor
- Safety engineer shall be daily Safety inspections of the work site on a schedule.
- All field personnel shall be instructed to recognize and avoid unsafe conditions and comply with the safety regulations applicable to his environment to control or eliminate any hazardous or other exposure to illness or injury.
- Proper personal protective equipment shall be furnished to the workers and enough safety installations shall be provided for the work.
- Good housekeeping shall be maintained during of the work.

- Emergency Procedures
- Each member of management and supervision shall be responsible to familiarize themselves with the emergency procedures which are applied to the site. When a serious accident involving personal injury or property damage occurs, Site Manager and/or Safety Engineers shall promptly take action including first aid and medical treatment.
- Reporting
- Any accident resulting in injury and/or damage to property is to be investigated by a safety committee and the result of the investigation including recommendations for preventive and corrective action shall be promptly documented for report to the Site Manager.



BUREAU VERITAS
Certification



Tumoh National Company W.L.L (TNCO)

Po.Box 47031 Fahaheel 64021 Kuwait

Tel: +965 2392 8288 Fax: +965 2392 8289

 www.tnco.com.kw  info@tnco.com.kw



TNCOKW